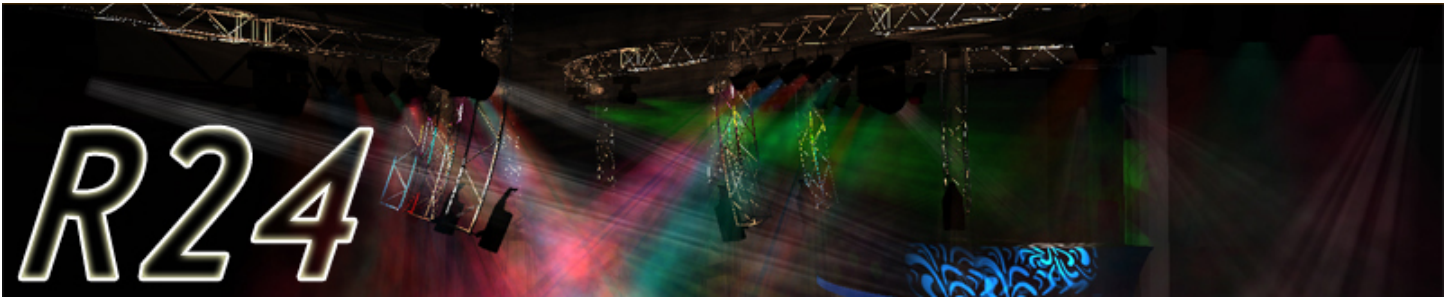




R24 = A WHOLE NEW VERSION OF **wysiwyg**



Really Virtually Real
Really Virtually Real

is the tagline for the launch of R24 -- **the third and final installment in the trilogy.** We

intend you to take it literally. **wysiwyg** previsualization and renders are **really virtually real**. What you see in Shaded View is exactly what you can get on the set, in the venue or on the exterior of the building.

Why is this so important? Because your professionalism depends on it!

With the new **wysiwyg** you get both the eye-popping images, appearing on screen or in the render or picture used to sell or get approval for the concept/project AND you know with confidence that you can deliver it in reality – a *win-win*! With the new **wysiwyg** and the stunning images it delivers, you will not need to work off a pretty picture, conceived by a non-production professional, that is not based on industry technology so you can't possibly deliver that design. **wysiwyg's** Library comprises greater than 20,000 intelligent lights, gobos, trusses, etc, so we simply don't need to cheat it!

wysiwyg *What You See Is What You Get. Seriously!*

R24's new visualization raises the standard for the industry and uses the new and existing features. However, even with this great step forward, our developmental advancements have not sacrificed or compromised **wysiwyg's** robustness or performance. Significant work has taken place "behind the scenes" to increase its speed, especially for the new visualization.

wysiwyg began as a DOS product 1994 running on a 386 desktop computer. It migrated to Windows in 2002 and today runs on any PC computer running Windows XP or Vista (32 or 64-bit) operating systems, and on any Intel MAC Computer running via Boot-camp or via a virtual machine. Throughout **wysiwyg's** evolution, the consistency, integrity and reliability of previz to reality was paramount and evolved hand in hand with the uncompromising standards and growth of the Library. Over time, advancements to previz resulted from better visualization plus ongoing Library development. We simply believe you cannot have one without the other. Today, **wysiwyg** delivers pre-visualization solutions via

3 product levels -- Report, Design, Perform -- to meet the creative and delivery demands of production professionals.

Rest assured, if you are a Lighting Designer, Director, Technician, Set Designer, Electrician, Architect, Meeting/Event Planner or Teacher/Instructor, we have a solution tailored to meet your needs. Keep in mind that our milestone advances are available on all levels of **wysiwyg** – Report, Design, Perform.

So for \$2499 you are solidly in the game with **wysiwyg** Design. If console connectivity is required you can step up to Perform, or if yours is a less complicated demand not requiring full 3D, use Report. (The only thing **wysiwyg** Design can't do, compared to the top-of-the-line Perform, is to connect to a console, media server or motion control system). **wysiwyg** is the only comprehensive software solution that is built for our industry; that delivers from concept to design – plotting to previz (in realtime OpenGL views or through our offline render engine). For one price you get an all-in-one software solution. One software that does it all means you only handle the data once (regardless of whether you make changes at a later stage), without translations or patches needed to migrate between softwares, and you get myriad efficiencies of a single, internally consistent, robust software solution.

Go ahead. Compare the punch of **wysiwyg** to the others. Compare Design's features, look, intuitive ease; its virtually unlimited capacity for automated and conventional fixtures, the depth and breadth of the Library, the practicality and quality-options for the renders, its pre-visualization and accompanying Technical Support. One low price for all that solution! The best value in the market priced at \$2499. One tremendous bang for your buck!

So, what is R22 + R23 + R24 ?

In R22, **wysiwyg** introduced our new enhanced beam simulation with soft-edge beams, accurate beam colour-mixing, lens flares, and animated smoke.

In R23, we enhanced the footprint qualities of the beams with new footprints, accurate shadows, an optional hot spot display, and our new video in beam feature to display video content for DL fixtures.

R24 - Continued

And now with the new features in R24, we advance our visualization to yet a higher level, making it so *really virtually real* and so convenient that you simply don't need to interrupt the creative process and go offline to render. New LED models use a point source to better represent a diode for LED fixtures and LED walls. The intelligence underlying a Library object, for example, calculates beam intensity using the Inverse Square Law so you can previsualize and render accurate beam drop-off, or applies colour temperature data that adapts for different wattages of different types of bulbs.

Keeping up with the increase in the number of productions and major special events being planned for the outdoors, how would you like to task the software to replicate various time-of-day lighting simulations and various outdoor weather conditions (for any geographical location) so you can previz your future show?

Really Virtually Real

*Visualization → a picture is worth 1000 words
...and can be worth big \$*

Visualization has been advanced to a higher level in Shaded View making it so real that you simply don't need to interrupt or stop the creative process and go offline to render. This advancement is possible because of the innovative new features. Here are some of them.

Enhanced Beams: Enhanced beams offer a softer edge beam with accurate colour mixing of overlapping beams and beams hitting coloured objects. Lens flare can also be seen from certain angles.



Enhanced Beams and Smoke Effect introduced in wysiwyg R22

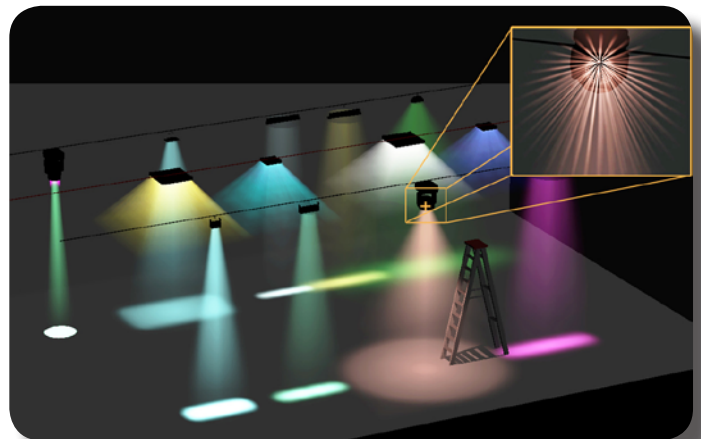
Improved Beam Footprints: Beam footprints now wrap around objects in *wysiwyg* as they would in the real world.

Smoke: The animated smoke and enhanced controls allow you to control smoke direction, speed, and density from the new Environmental tab of the Shaded View's, View Options dialog.

Shadows: Now shadows are an extension of the new footprints—*wysiwyg* accurately determines where the shadows are

while calculating where footprints hit objects in the scene. The best quality shadows will result by turning on "Soft Shadows" to smoothen the shadow outlines (essentially an anti-aliasing technique). And now, with CAST's new visualization technology, shadows will appear through translucent materials, such as curtains, creating an impressive shadow effect.

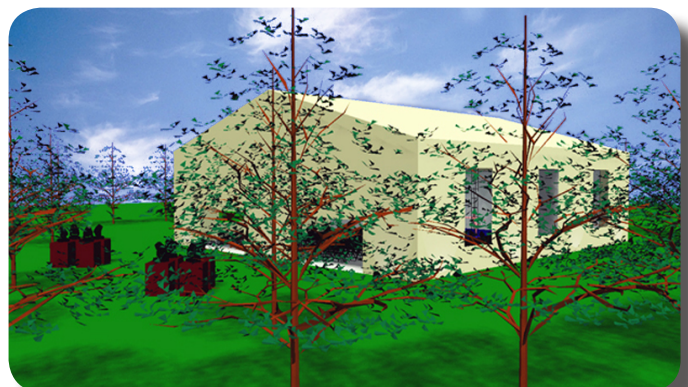
LEDs! With new LED light sources and LED flare capability offering better representation in Shaded View, LED Fixtures and LED Walls look better, are more efficient and deliver better performance. This is an enormous advantage as LEDs are being used to some degree in almost every lighting design. This also means that simple light bulbs and other single point light sources will be nicely modeled in *wysiwyg*.



New LED light source

Inverse Square Law: A new upgrade in R24, it calculates accurate beam drop-off in visualization calculations to make the beams really virtually real.

For outdoor events: R24 introduces a time-of-day capability in Shaded View. Use climatic or environmental conditions specific to the time and place (and all sorts of possible weather) specific to your event's geographical location – anywhere around the world → any date → any time -- to test your ideas and demonstrate your work. Now your Shaded View presents instantly what you formerly had to render – instantly print your Shaded View.



Time-of-Day in Shaded View

R24 - Continued

Colour temperature: Information from our Libraries, concerning adapting images for different bulb wattages, is used to more accurately display the photometrics of different bulbs.



New features composing a **Really Virtually Real Image!**

Hot Spots: Hot spots enhance visual realism and are now distributed based on the photometric data of the fixture.

Video in Beams (for DL fixtures capable of displaying video):

In keeping with the increasing number of digital lighting fixtures capable of displaying video content, this new feature lets you pre-visualize videos through the fixture's beam and footprint in Shaded View.

Geometry Smoothing in OpenGL: This new shading technique delivers better looking sets and people, plus a performance boost.

CITP Protocol for Video: This new feature allows consoles which support this protocol to stream video content across a network into **wysiwyg** to be displayed on a video screen or DL fixture.

Design Tools → intuitive, logical, just what you need

Footprint Focus: Using the new Footprint Focus feature, you can change the footprint's focus distance in visualize the footprint in Shaded Views, in effect varying the focus of the footprint from "hard" to "soft". (In previous versions, footprint focus was always "hard".) This feature is available for conventional fixtures (in CAD mode through the Fixture Properties), as well as for automated fixtures (in Design mode through the new Footprint Designer Tool). To display Footprint Focus, you turn it on in the Lighting tab of the Shaded View's, View Options dialog. Note: In a future **wysiwyg** release, the Footprint Focus feature will be extended to function in Live Mode like all other Designer tools.

Fixture Point of View (POV): The Fixture POV increases previous functionality to support automated fixtures and now provides fixture information (for example, Patch, Channel, Dimmer, etc.) at the bottom of the Shaded View. Now you can use the enhanced Fixture POV feature in conjunction with Footprint Focus to focus lights from **wysiwyg** and then provide screenshots of the desired footprint focus to his stage crew.

Updates to Designer Tools: The look, feel, intuitiveness and ease of use have been enhanced. Many now offer more informative feedback of set values for the selected fixtures, making the design process a lot easier. New functionality for enhanced colour-mixing options (RGB, CMY, HSI) is available through the Colour tool.

Ruler Tool: The Ruler tool provides a handy point of reference in CAD Wireframe views, enabling you to measure the objects that you are drawing and get an accurate idea of the distances between items in your plot.

New Font Capabilities: While working in CAD and paperwork you can now select TrueType fonts and styles for CAD mode and New Plots. On the new Font Styles tab of the User Options window, you can specify the font that you would like to appear globally in all new text labels, New Plots, and fixture layout labels. Mesh consolidation: This new CAD feature lets you group selected faces into one mesh to simplify the objects dramatically and improve overall performance.

Dongle-less Background Render Manager: We have removed the dongle restriction currently set on the Background Render Manager so that you can install the Background Render Manager software on other computers so you can run rendering jobs from independent idle computers. Now you can set up as many rendering computers as you need to help you complete your renderings.

AutoFocus: is the protocol that **wysiwyg** uses to "talk back" to a compatible console. Using the mouse in a Wireframe view or using the concept shortcuts and design tools at any time, you can direct the console to select fixtures, set focus, and control intensity, iris, and colour. AutoFocus is connected through MIDI, Serial, or Ethernet.

AutoPatch: is a protocol used by **wysiwyg** to transfer the patch hookup to a compatible console. AutoPatch is only available in **wysiwyg** Perform. You must be connected to a compatible console for this feature to be enabled. All ports for which you want the patch information to be transferred must be properly bound. Only the hookup information in patch universes bound to the console's outputs will transfer.

Library → becomes a bigger and more useful resource

Comprising more than 20,000 lights, gobos, trusses, etc. the Library is one of its most valuable components of **wysiwyg**, often sought-after by others. From LEDs to automated lights, all types of fixtures from all regions of the world making **wysiwyg** the only solution for truly international professionals and traveling productions.

Remember, only **wysiwyg** certifies that all additions to the Library are completely accurate and fully reliable. Many hours are in-

R24 - Continued

vested and a rigorous standard testing protocol is used for each library item to ensure model accuracy and reliability. As well, all library fixtures and accessories are tested in **wysiwyg** before we release them to you. New additions to the Library are added all the time so keep your eye on the website.

Our discipline and the frequent addition of new lights mean we deliver reality so your creativity can be *really virtually real*.

Searchable Library Browser: Ever find yourself clicking through hundreds of Library files in search of a fixture or that perfect item for your file. In the Library browser, simply click the category tab that you're interested in, and then type the object name (or part of it) in the Search box at the top of the browser panel. All objects that match your query are shown. Note that on the Library tab, you have to select the folder in which your object is stored before you search.

Numerous Library Updates: Our enormous Library continues to grow with every new release of **wysiwyg**. At least a few times per year, our library department compiles the latest fixtures, truss, gobos, gels -- library objects which are popular in the industry -- and includes them as new items available for you from the Library Browser.

Security & Product Levels → new options

Improved Dongle Security System: We have improved the security of our products. Using better encryption algorithms for our dongles, we are protecting your investment and making **wysiwyg** more difficult to be tampered with by hackers. As a result, all dongles currently in the field must be checked to confirm they support **wysiwyg**'s new security system. For newer USB dongles that pass the test, an online process is available that updates your dongle to run with R23 and newer Releases; older USB dongles that fail the test (do not support the new security system) and all Parallel dongles must be exchanged by contacting CAST Software for a new USB dongle. Replacement dongles are free for **wysiwyg** Members in good standing.

Dongle Re-Authorization: This new initiative will help safeguard your dongle, ensuring that if it is lost, stolen, or found by someone else, the new user will only be able to work with it until the currently authorized date, but never beyond. Re-authorization requires that you "re-authorize" your dongle once each year by logging into your Member's site, obtaining your Dongle Re-authorization Code and then applying this new code to your dongle.

Dongle Leasing: Starting with Release 24, you will have the option to lease your Dongle on a prepaid yearly basis. Leased dongles will carry the same privileges as purchased ones (i.e., software updates, library updates, and technical support). However, unlike purchased dongles, once the lease term has expired,

that dongle will not permit **wysiwyg** to operate. At that point, you can either renew the lease term or purchase the dongle. This option is more expensive than renewing your Membership but may appeal to those who use **wysiwyg** infrequently. Full details and pricing for Dongle Leasing will be available when R24 is launched.

Use the power and reality of the best ... to show off your best ...

wysiwyg Demo (Dongle-less Console Viewer): To better show the power of **wysiwyg**, we have introduced console connectivity to any of our RWD's consoles and included limited, read only sample files in the Demo. With **wysiwyg** Demo, your hardware can connect and display full lighting functionality with a real lighting console, with cues from your console, and experience the value of **wysiwyg**'s LIVE Shaded View as a tool to pre-visualize a show.



YES stage lighting in R23 Shaded View



New features composing a *Really Virtually Real* Image!



IT JUST KEEPS GETTING BETTER

wysiwyg development and innovation continues from two distinct approaches which work together in that the rolling forward long-term objectives for **wysiwyg** development and innovation define the innovative new features the Releases which are delivered in the short-term. Accordingly, and we have big plans, currently

under development, for the future. As a result, consistent with the past years and on into the future, you can expect that **wysiwyg** just keeps getting better!

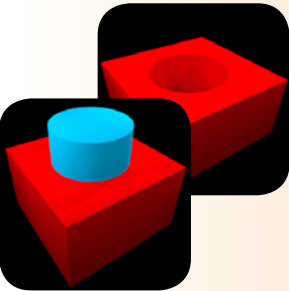
Here are a few highlights of recent Releases leading up to R22 + R23 + R24

Some of our recent milestones



R21 – Dec 07

100 NEW FIXTURES! CAST's biggest – ever. From LEDs to automated lights, all types of fixtures from all regions of the world → every single fixture addition came directly from a User request.



R20 – July 07

Better File Sizes – LOT smaller, faster, and more manageable.

Better Holes – new Subtract/Unite/Intersect tool to do stuff like blast out a window in a wall, join two cylinders into one, and merge two objects.

Better Pictures – LES Wizard Image Mapping and new Image Console let you simulate low to medium res LED walls or curtains and apply images to arrays of light-emitting surfaces. (Ed: the precursor to the new LEDs).

Better Lines – choice of new Line Weight Options → improve the look and legibility of your plots.



R19 – Mar 07

New features let Users **import from Google's SketchUp**

PLUS library object texturing; 200+ new or updated gobos; 200+ new types of truss; 145 new fixtures (moving, conventional, LED, and more); improved accuracy of moving lights.



IT JUST KEEPS GETTING BETTER !

Updated Features List

wysiwyg offers Production Professionals an unparalleled, comprehensive toolset. Most Users choose **wysiwyg** Design. If you need to connect to supported consoles or motion controlling devices, or to use **wysiwyg**'s time-saving AutoPatch and AutoFocus features, then you need to step up to **wysiwyg** Perform. **wysiwyg** Report is the introductory level with limited capabilities, usually ideal for students or those entering our Industry.

Dealers, lighting console manufacturers or any lighting professionals can use the new **wysiwyg** DV (for Demo Version) for free, without a dongle, as a viewer to demonstrate or learn consoles,

using one of 4 different custom built onboard sample files. DV is an extremely beneficial tool to use at showrooms, testing labs, trade shows, fairs and conventions around the world. (As always, connectivity occurs via CAST's Registered **wysiwyg** Developer Program. Any of CAST RWD's can instantly take advantage of this free viewer working on their equipment!)

See the Table below for a helpful comparison of the available **wysiwyg** products. For more information about these products, go to www.wysiwygsuite.com or contact CAST Software.

Product Comparison Table - R24 (Jul 09)

	<i>perform</i> \$4999	<i>design</i> \$2499	<i>report</i> \$699	<i>demo</i> (free)	<i>viewer</i> (free)
CAD					
2D views	✓	✓	✓	✓	✓
3D views	✓	✓		✓	✓
CAD elements & shapes	✓	✓	✓	✓	
CAD modelling tools	✓	✓	✓	✓	
Metric & imperial unit systems	✓	✓	✓	✓	✓
Drawing in real-world measurements	✓	✓	✓	✓	
Layers & Scenes	✓	✓	✓	✓	
Undo	✓	✓	✓	✓	
Venue creation	✓	✓	✓	✓	
Dimensioning	✓	✓	✓	✓	
Conventional fixture support	✓	✓	✓	✓	
Automated fixture support	✓	✓	✓	✓	
Fixtures automatically attach to hanging structures	✓	✓	✓	✓	
Truss structures	✓	✓	✓	✓	
Graphic representation of lighting accessories	✓	✓	✓	✓	
Fixture focus (Pan / Tilt)	✓	✓	✓	✓	
Footprint focus	✓	✓	✓	✓	
Shutters and beam shaping	✓	✓	✓	✓	
Intelligent library items (not symbols)	✓	✓	✓	✓	
Snap tools	✓	✓	✓	✓	
Align tools	✓	✓	✓	✓	
Line Weights	✓	✓	✓	✓	✓
TrueType Fonts	✓	✓	✓	✓	
Boolean operations	✓	✓	✓	✓	
Consolidate Mesh	✓	✓	✓	✓	
Import floorplan image	✓	✓	✓	✓	
Import from .skp file format	✓	✓	✓		
Import & export from .dwg & .dxf format	✓	✓	✓		

R24 - Continued

Product Comparison Table - R24 (Jul 09)

	perform \$4999	design \$2499	report \$699	demo (free)	viewer (free)
WIZARDS & TOOLS					
Riser tool	✓	✓	✓	✓	
Venue creation tool	✓	✓	✓	✓	
Render Wizard	✓	✓	✓	✓	
Offline lighting designer tools	✓	✓	✓	✓	
Light Emitting Diode (LED) Wizard	✓	✓	✓	✓	
Quick tools	✓	✓	✓	✓	
PAPERWORK					
Interactive with CAD	✓	✓	✓	✓	
Data entry	✓	✓	✓	✓	
Customizable report content	✓	✓	✓	✓	
Customizable report headings & layout	✓	✓	✓	✓	✓
Data filtering	✓	✓	✓	✓	
Error checking	✓	✓	✓	✓	
Create spreadsheets	✓	✓	✓	✓	
Export to Excel (.xls) format	✓	✓	✓		
Print spreadsheets	✓	✓	✓		
Add spreadsheets to plots	✓	✓	✓	✓	
PLOTS					
Customizable plot layout	✓	✓	✓	✓	✓
Printable workspace	✓	✓	✓		✓
Multiple views on one page	✓	✓	✓	✓	✓
Paperwork on plots	✓	✓	✓	✓	✓
Logos & bitmaps on plots	✓	✓	✓	✓	✓
Scaling	✓	✓	✓	✓	✓
Key Wizard	✓	✓	✓	✓	✓
Legend Wizard	✓	✓	✓	✓	✓
Title block	✓	✓	✓	✓	✓
Tile printing	✓	✓	✓		✓
PRE-VISUALIZATION					
3D views	✓	✓		✓	✓
Light beams in 3D views	✓	✓		✓	
Enhanced beams (accurate colour mixing, lens flare, hot spot)	✓	✓		✓	
Shadow simulation	✓	✓		✓	
Smoke simulation	✓	✓		✓	
Light emitting diodes (LEDs) simulation	✓	✓		✓	
Light emitting surface simulation	✓	✓		✓	
Textures support	✓	✓		✓	
Custom gobo support	✓	✓		✓	

R24 - Continued

Product Comparison Table - R24 (Jul 09)

	<i>perform</i> \$4999	<i>design</i> \$2499	<i>report</i> \$699	<i>demo</i> (free)	<i>viewer</i> (free)
PRE-VISUALIZATION - CONTINUED					
Visualization of pre-recorded & live streaming video	✓	✓		✓	
Video beam support for digital lighting fixtures	✓	✓		✓	
Real beam simulation for Colour Temp & Inverse Square Law	✓	✓		✓	
Pre-viz moving elements without ext. Controller	✓	✓		✓	
Time of Day Simulation (Environmental Lighting)	✓	✓		✓	
Transition between saved looks	✓	✓		✓	
Fixture Point of View (POV) in 3D view	✓	✓		✓	
User-definable Performance & Style View Options	✓	✓		✓	
Connection to DMX devices	✓			samples	
Hook-up channel count capacity	Up to 51200			samples	
Direct connection to supported consoles	✓			samples	
Connection to motion control devices	✓			samples	
2-way console comm. (AutoFocus,AutoPatch)	✓			samples	
Control moving elements via DMX	✓			samples	
Video interface via CIP Protocol	✓			samples	
RENDERING					
Photo-realistic renderings	✓	✓		100 x 100	
Create renderings without DMX source	✓	✓		✓	
Material property simulation	✓	✓		✓	
Natural light / sun mapping	✓	✓		✓	
Light emitting surfaces	✓	✓		✓	
Background Rendering Manager (offline capability)	✓	✓		✓	
LIBRARIES					
Searchable Library Browser	✓	✓	✓	✓	
Fixture library	✓	✓	✓	✓	
Conventional fixture count (in library)	2510+	2510+	2510+	2510+	2510+
Automated fixture count (in library)	650+	650+	650+	650+	650+
Truss library	4400+	4400+	4400+	4400+	4400+
Gobo library	3800+	3800+	3800+	3800+	3800+
Color library	2050+	2050+	2050+	2050+	2050+
Texture library	✓	✓	✓	✓	
Material library	✓	✓	✓	✓	
Create custom conventional fixtures	✓	✓	✓	✓	
Create custom library items	✓	✓	✓	✓	

R24 - Continued

Product Comparison Table - R24 (Jul 09)

	<i>perform</i> \$4999	<i>design</i> \$2499	<i>report</i> \$699	<i>demo</i> (free)	<i>viewer</i> (free)
USER INTERFACE					
Simple CAD navigation	✓	✓	✓	✓	
Customizable screen layout	✓	✓	✓	✓	✓
Customizable ruler tool	✓	✓	✓	✓	
Dual monitor support	✓	✓	✓	✓	✓
Multiple popup windows supported	✓	✓	✓	✓	✓
Integrated libraries	✓	✓	✓	✓	✓
User definable fixture attribute notation	✓	✓	✓	✓	
GENERAL					
Dongle Security – AES Encryption	✓	✓	✓		
Dongle Reauthorization Program	✓	✓	✓		
Dongle Lease Program	✓	✓	✓		
Dongle-less Console Viewer (with Sample Files only!)					✓
Auto-save	✓	✓	✓		
Reference Guide	✓	✓	✓	✓	✓
Online HTML help	✓	✓	✓	✓	✓
Context-sensitive help	✓	✓	✓	✓	✓
Technical Support (included with Membership)	✓	✓	✓	✓	✓
Import formats	DWG, DXF, SKP, BMP, JPG, PNG, GIF, TGA, TIFF, LW2, Excel			image formats	
Export formats	DWG, DXFBMP, JPG, PNG, GIF, TGA, TIFF, Excel				
CamStudio	Optional during Installation				



R24 BETA TESTING

Beta testing — committed to sustaining high standards while gleaning your valuable ideas for the future

CAST's objective for its Beta Testing Program is to uphold the highest level of dependability and robustness by enlisting Members to test drive Releases, and sometimes specific innovations, in the field under a breadth of real conditions. CAST carefully monitors the Testers and ensures a reasonable cross-section of uses in order to optimize the usefulness of the feedback.

CAST takes Beta Tester and Member feedback very seriously. Dany Tancou, Technical Support Manager for CAST Software says, "One of my main responsibilities is helping Members solve unique challenges, which often translates into great ideas for future **wysiwyg** Releases. Although we get input from many sources, our Members are our greatest source of inspiration."

If you'd like to be considered for upcoming Releases, please get in touch with Dany@cast-soft.com.

As you read this article, Beta Testing of R24 has wrapped up and the final tweaking and fixes are being put into R24, and tested prior to its release to Members.

Beta testers' draw

On 09 Jul 09, Dino Mazza, Product Manager, and Dany Tancou, Manager Tech Support, put the names of all Beta Testers who submitted **wysiwyg** R24 Beta Test feedback before the contest deadline into a box and drew a winner.



And the winner is...[drum roll] Yves MANGIN, Light Designer / operator of Strasbourg, France. Yves, who works in an independent firm with a number of production professionals, wins a free one-year Membership renewal for his **wysiwyg**.

Congratulations and our gratitude to Yves and all Beta 24 Testers.

Let us introduce Yves ...



"As a Lighting Designer, **wysiwyg** is very important to me. My imagination and creativity run freely; new concepts can be tried and previsualized. Without spending one Euro, I can see on my screen what works, tweak and produce alternative concepts or decide to start over. Then at the end, **wysiwyg** allows me to present a very realistic 3D project to my clients.

The great advantage of **wysiwyg** is that technically, you soon notice all the possibilities it gives you, according to the size of the decoration, of the room and according to the sound. The virtual reality from **wysiwyg** and reality are very similar.

The virtual reality to reality is easy to achieve because **wysiwyg** uses real equipment standards. This is a huge gain of time on the set. I get less stress and have no anxiety about the question of reliability of the system.

Finally, from the perspective of the "operator", the live mode function is, without any doubt, the strength of **wysiwyg** [that is AutoPatching & AutoFocus]; it saves working time on the set and for setting up and focusing the lights, even the advantage and time saving of getting the lights to operate during the rehearsal."



Thank you Yves!

